



DUPIXENT[®]
(dupilumab) Injection 300mg

DU
more
WITH LESS COPD

**THE FIRST-OF-ITS-KIND TREATMENT FOR COPD
(CHRONIC OBSTRUCTIVE PULMONARY DISEASE)**

INDICATION:

DUPIXENT is a prescription medicine used with other medicines for the maintenance treatment of adults with inadequately controlled chronic obstructive pulmonary disease (COPD) and a high number of blood eosinophils (a type of white blood cell that may contribute to your COPD). DUPIXENT is used to reduce the number of flare-ups (the worsening of your COPD symptoms for several days) and can improve your breathing.

DUPIXENT is not used to relieve sudden breathing problems and will not replace an inhaled rescue medicine. It is not known if DUPIXENT is safe and effective in children with COPD under 18 years of age.

Please see additional Important Safety Information throughout and full Prescribing Information including Patient Information.

LIVING WITH COPD

There are several factors that contribute to COPD, such as pollution, smoking, and even genetics. When your symptoms become worse than usual, you could be having a flare-up, that could last several days. You may experience chronic coughing, wheezing, fatigue, or have trouble breathing. These flare-ups may be **mild**, **moderate**, or quite **severe**.



Mild flare-ups require additional use of a rescue inhaler



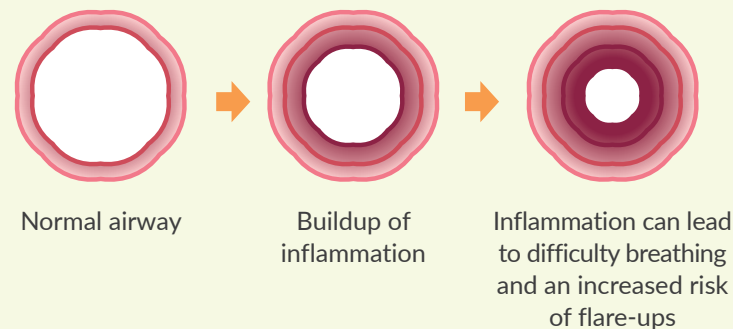
Moderate flare-ups require use of oral steroids and/or antibiotics in addition to a rescue inhaler



Severe flare-ups require hospitalization or a visit to the ER

Worse still, each flare-up can shorten the time until your next one. **COPD is a chronic, progressive disease that should be treated.**

HOW INFLAMMATION AFFECTS THE AIRWAYS



Research has shown that **flare-ups can be caused by a type of underlying inflammation in the airways of the lungs**. Thankfully, there may be something you can do about this.

IMPORTANT SAFETY INFORMATION (cont'd): Do not use if you are allergic to dupilumab or to any of the ingredients in DUPIXENT®.

Before using DUPIXENT, tell your healthcare provider about all your medical conditions, including if you:

- have eye problems.
- have a parasitic (helminth) infection.
- are scheduled to receive any vaccinations. You should not receive a “live vaccine” right before and during treatment with DUPIXENT.

Please see additional Important Safety Information throughout and full Prescribing Information including Patient Information.

THE FIRST TREATMENT OF ITS KIND

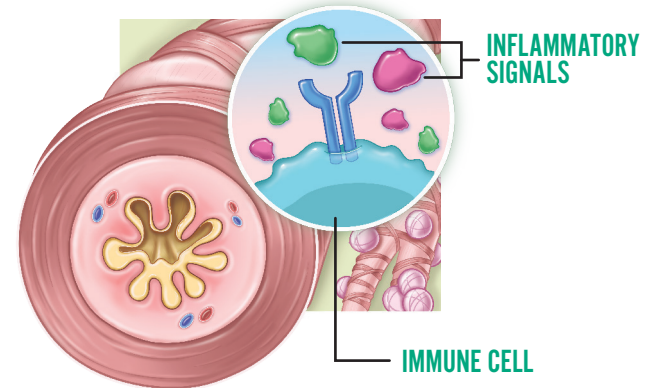
DUPIXENT treats COPD differently. It helps block a key source of inflammation in the lungs. A routine blood test can detect whether you have this type of inflammation. DUPIXENT is an add-on treatment used when other COPD medications aren't enough. It is not an immunosuppressant, inhaler, steroid, or antibiotic.

IMPORTANT SAFETY INFORMATION (cont'd): Before using DUPIXENT, tell your healthcare provider about all your medical conditions, including if you (cont'd):

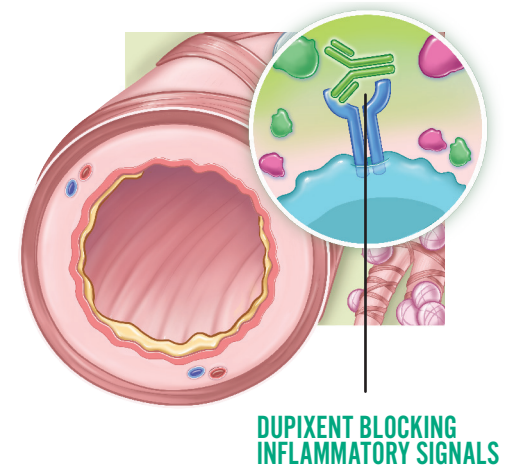
- are pregnant or plan to become pregnant. It is not known whether DUPIXENT will harm your unborn baby.
 - A pregnancy registry for women who take DUPIXENT during pregnancy collects information about the health of you and your baby.

Please see additional Important Safety Information throughout and full Prescribing Information including Patient Information.

BEFORE DUPIXENT



AFTER DUPIXENT



Intended to show the mechanism only and not reflective of treatment effect with DUPIXENT. Image is illustrative only.

DUPIXENT[®] 
(dupilumab) Injection 300mg

BETTER breathing IS POSSIBLE

At 52 weeks, in two clinical trials:

DUPIXENT WAS PROVEN TO PROVIDE BETTER BREATHING THAT LASTS

If you have COPD, you want improved lung function, and you want it to be long-lasting too. DUPIXENT helps people breathe easier starting in as little as two weeks.

That's what makes **more** possible.

IMPORTANT SAFETY INFORMATION (cont'd): Before using DUPIXENT, tell your healthcare provider about all your medical conditions, including if you (cont'd):

- are breastfeeding or plan to breastfeed. It is not known whether DUPIXENT passes into your breast milk. Tell your healthcare provider about all the medicines you take, including prescription and over-the-counter medicines, vitamins, and herbal supplements.

Please see additional Important Safety Information throughout and full Prescribing Information including Patient Information.



DUPIXENT[®]
(dupilumab) Injection 300mg

IMPORTANT SAFETY INFORMATION (cont'd):
Especially tell your healthcare provider if you are taking oral, topical, or inhaled corticosteroid medicines or have COPD and also have asthma. **Do not** change or stop your other medicines, including corticosteroid medicine or other asthma medicine, without talking to your healthcare provider. This may cause other symptoms that were controlled by those medicines to come back.

DUPIXENT can cause serious side effects, including:

- **Allergic reactions. DUPIXENT can cause allergic reactions, including skin reactions, that can sometimes be severe.** Stop using DUPIXENT and tell your healthcare provider or get emergency help right away if you get any of the following signs or symptoms: breathing problems or wheezing, swelling of the face, lips, mouth, tongue or throat, fainting, dizziness, feeling lightheaded, fast pulse, fever, hives, skin rash, including rash that looks like a bullseye or painful red or blue bumps under the skin, general ill feeling, itching, swollen lymph nodes, nausea or vomiting, joint pain, or cramps in your stomach area.

WHEN USED WITH COPD INHALERS,* **DUPIXENT**[®] (dupilumab):



Relieved COPD symptoms by helping **reduce flare-ups**



Led to improvement in patients' day-to-day lives[†]

The most common side effects in patients with chronic obstructive pulmonary disease include: injection site reactions, common cold symptoms (nasopharyngitis), high count of a certain white blood cell (eosinophilia), viral infection, back pain, inflammation inside the nose (rhinitis), diarrhea, stomach problems (gastritis), joint pain (arthralgia), toothache, headache, urinary tract infection.

*COPD inhalers are considered standard of care (SOC), which refers to a typical treatment approach prescribed by a healthcare professional for COPD.

[†]Assessed by SGRQ, a quality-of-life tool which measures COPD symptoms, physical activity, emotional well-being, and social functioning. In two trials, 51% of patients who received DUPIXENT + SOC experienced a quality-of-life improvement vs 43% and 47% with placebo + SOC. In one trial, results are descriptive; no definitive conclusions can be made.

Please see additional Important Safety Information throughout and full Prescribing Information including Patient Information.

DUPIXENT[®]
(dupilumab) Injection 300mg

WITH DUPIXENT[®] (dupilumab)

more

IS POSSIBLE



HOW DUPIXENT[®] (dupilumab) IS TAKEN

DUPIXENT is an injection given subcutaneously (under the skin) once every two weeks. If a healthcare provider decides that you or a caregiver can give DUPIXENT injections, you should receive training on the right way to prepare and inject DUPIXENT.

PATIENTS	RECOMMENDED DOSE	FREQUENCY
18+ years	300 mg	Every 2 weeks

IMPORTANT SAFETY INFORMATION (cont'd):
DUPIXENT can cause serious side effects, including (cont'd):

- **Eye problems.** Tell your healthcare provider right away if you have any new or worsening eye problems, including eye pain or changes in vision, such as blurred vision. Your healthcare provider may send you to an ophthalmologist for an exam if needed.
- **Joint aches and pain.** Some people who use DUPIXENT have had trouble walking or moving due to their joint symptoms, and in some cases needed to be hospitalized. Tell your healthcare provider about any new or worsening joint symptoms. Your healthcare provider may stop DUPIXENT if you develop joint symptoms.



PRE-FILLED PEN

This pen features a design that keeps the needle hidden during use. A viewing window and a 2-click sound let you know when your injection is complete.



PRE-FILLED SYRINGE

This syringe features a needle shield as well as a contoured finger grip to provide a firm hold while you control the speed of your injection.

QUESTIONS ABOUT INJECTING? RESOURCES ARE HERE FOR YOU.

Click here for **supplemental injection resources** and **training videos**.

Please see additional Important Safety Information throughout and full Prescribing Information including Patient Information.

HAS YOUR DOCTOR PRESCRIBED DUPIXENT[®] (dupilumab)?

Your healthcare provider is your best resource for information about DUPIXENT and should be your primary point of contact throughout your treatment journey.

YOU BEGIN YOUR JOURNEY.

Your healthcare provider prescribes DUPIXENT, and you enroll into *DUPIXENT MyWay*[®].

- Your healthcare provider can download the enrollment form on [DUPIXENT.com](https://www.dupixent.com), help you fill it out, and fax it back to *DUPIXENT MyWay* at **1-844-387-9370**
- You or your healthcare provider can call **1-844-DUPIXEN(T), Option 1**
- Providing your email address allows *DUPIXENT MyWay* to give you more support resources about DUPIXENT

IMPORTANT SAFETY INFORMATION (cont'd):
The most common side effects in patients with chronic obstructive pulmonary disease include injection site reactions, common cold symptoms (nasopharyngitis), high count of a certain white blood cell (eosinophilia), viral infection, back pain, inflammation inside the nose (rhinitis), diarrhea, stomach problems (gastritis), joint pain (arthralgia), toothache, headache, and urinary tract infection.
Please see additional Important Safety Information throughout and full Prescribing Information including Patient Information.

WHAT CAN *DUPIXENT MyWay*[®] DO FOR YOU?

Enrolling in *DUPIXENT MyWay* can help ensure you receive DUPIXENT as quickly as possible and receive additional support along your treatment journey. For eligible patients, *DUPIXENT MyWay* can:



Help research and explain your insurance benefits



Find ways to help with the out-of-pocket cost of DUPIXENT if you need help with your copay, you are denied coverage from your health plan, or you do not have or experience a loss in insurance



Connect you with a Nurse Educator to answer questions about DUPIXENT and help you start and stay on track with therapy



Connect you with your specialty pharmacy to make sure your prescription is shipped to your home or preferred location



Explain how to properly store DUPIXENT when you receive your shipment



Provide supplemental injection training—in person, virtually, or over the phone—to help you or a caregiver get more familiar with injecting DUPIXENT



Offer a needle-disposing kit or sharps container for proper disposal

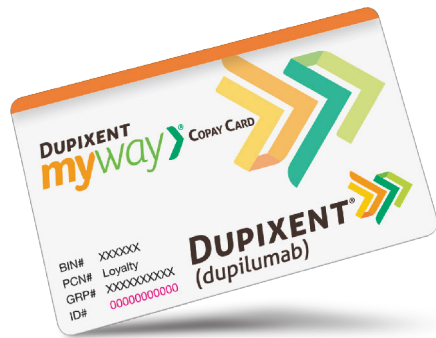


Remind you when it is time to refill your DUPIXENT prescription

SUPPORT YOU DESERVE

YOUR COPAY MAY BE AS LITTLE AS \$0*

The **DUPIXENT MyWay**[®] Copay Card may help eligible patients cover the out-of-pocket cost of **DUPIXENT**.



YOU MAY BE ELIGIBLE FOR THE COPAY CARD PROGRAM IF YOU:

- Have commercial insurance
- Have a **DUPIXENT** prescription for an FDA-approved condition
- Are a resident of the 50 United States, the District of Columbia, Puerto Rico, Guam, or the US Virgin Islands, and are a patient or caregiver aged 18 years or older

YOU ARE NOT ELIGIBLE IF YOU:

- Have government insurance—Medicaid, Medicare, Veterans Affairs, Department of Defense, TRICARE, other federal or state programs

[99%] OF COMMERCIALLY INSURED PATIENTS ARE NATIONALLY COVERED FOR **DUPIXENT**!

Eligible patients with commercial health insurance may pay **as little as \$0* in copay** per fill of **DUPIXENT**[®] (dupilumab). Terms and conditions apply.

[*Subject to the program maximum per patient per calendar year. Approval is not guaranteed. **THIS IS NOT INSURANCE**. Not valid for prescriptions paid, in whole or in part, by Medicaid, Medicare, VA, DOD, TRICARE, or other federal or state programs, including any state pharmaceutical assistance programs. This program is not valid where prohibited by law, taxed, or restricted. **DUPIXENT MyWay** reserves the right to rescind, revoke, terminate, or amend this offer, eligibility, and terms of use at any time without notice. Any savings provided by the program may vary depending on patients' out-of-pocket costs. The program is intended to help patients afford **DUPIXENT**. Patients may have insurance plans that attempt to dilute the impact of the assistance available under the program. In those situations, the program may change its terms. Additional terms and conditions apply.]

OTHER OPTIONS FOR SUPPORT

Through the **Patient Assistance Program**, patients who are uninsured or rendered uninsured by their insurance provider could receive **DUPIXENT** free of charge if they qualify. Those who may qualify must be at least 18 years of age or older, a resident of the 50 United States, the District of Columbia, Puerto Rico, Guam, or the USVI and demonstrate a financial need.

more

TO DISCUSS WITH YOUR DOCTOR

These questions can help guide you on what to ask. It's important for your doctor to understand your COPD symptoms and the coping mechanisms you may be using.

Have any of these COPD symptoms worsened in the past 3 months?

- Trouble breathing
- Chronic coughing
- Persistent phlegm
- Wheezing or chest tightness
- Fatigue

Have you done the following in the last year?

- Adapted chores or activities to make them easier
- Canceled plans or avoided certain activities
- Used a rescue inhaler
- Taken steroids or antibiotics
- Gone to the hospital or ER

How does COPD affect you?

- It does not stop me from doing things I would like to do
- It stops me from doing some things I would like to do
- It stops me from doing a lot of the things I would like to do



IMPORTANT SAFETY INFORMATION (cont'd):

Tell your healthcare provider if you have any side effect that bothers you or that does not go away. These are not all the possible side effects of DUPIXENT. Call your doctor for medical advice about side effects. You are encouraged to report negative side effects of prescription drugs to the FDA. Visit www.fda.gov/medwatch, or call 1-800-FDA-1088.

Use DUPIXENT exactly as prescribed by your healthcare provider. It's an injection given under the skin (subcutaneous injection). Your healthcare provider will decide if you or your caregiver can inject DUPIXENT. **Do not** try to prepare and inject DUPIXENT until you or your caregiver have been trained by your healthcare provider.

Please see additional Important Safety Information throughout and full Prescribing Information including Patient Information.



DUPIXENT[®]
(dupilumab) Injection 300mg



WHAT WILL YOU DO
WITH YOUR **more?**

**ASK YOUR DOCTOR
ABOUT DUPIXENT TODAY**

[Click here](https://www.dupilumab.com/COPD) to visit [DUPIXENT.com/COPD](https://www.dupilumab.com/COPD)

IMPORTANT SAFETY INFORMATION:

Do not use if you are allergic to dupilumab or to any of the ingredients in DUPIXENT[®].

Please see additional Important Safety Information throughout and full [Prescribing Information](#) including [Patient Information](#).

sanofi | **REGENERON**[®]

© 2026 Sanofi and Regeneron Pharmaceuticals, Inc. All Rights Reserved.
DUPIXENT and DUPIXENT MyWay are registered trademarks of Sanofi or an affiliate.
US.DUP.26.03.0056 05/2026

Health information contained herein is provided for general educational purposes only. Your doctor is the single best source of information regarding your health. Please consult your doctor if you have any questions about your health or treatment.