

**DUPIXENT**<sup>®</sup>  
(dupilumab) Injection  
200mg · 300mg

THIS

or

THAT

HOW WILL YOU DEAL WITH YOUR EoE?

**START TREATING  
WITH DUPIXENT**

Patient Portrayals

### INDICATION

DUPIXENT is a prescription medicine used to treat adults and children 1 year of age and older with eosinophilic esophagitis (EoE), who weigh at least 33 pounds (15 kg). It is not known if DUPIXENT is safe and effective in children with EoE under 1 year of age, or who weigh less than 33 pounds (15 kg).

### IMPORTANT SAFETY INFORMATION

**Do not use** if you are allergic to dupilumab or to any of the ingredients in DUPIXENT<sup>®</sup>.

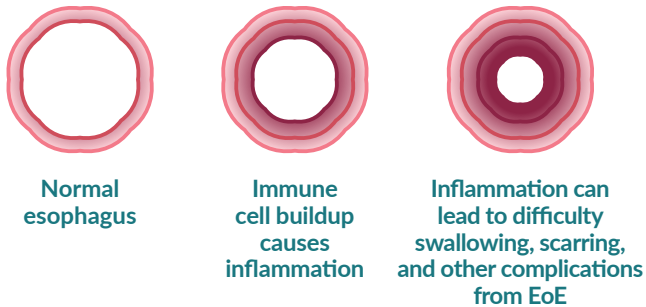
Please see additional Important Safety Information throughout and full Prescribing Information including Patient Information.

EoE = eosinophilic esophagitis

# WHAT IS EoE?

Eosinophilic Esophagitis (EoE) is a **chronic and progressive** condition that can damage the esophagus over time.

People with EoE have inflammation in the esophagus, the tube that connects the throat to the stomach. The inflammation occurs when a large number of immune cells (including eosinophils) build up within the esophagus. This buildup is due to an abnormal response of the immune system, known as Type 2 inflammation. EoE is a chronic condition that can get worse over time.



For some people, inflammation and the associated changes in the esophagus could lead to food getting stuck in the esophagus, also known as food impaction. This can result in a trip to the ER.

EoE can be mistaken for other conditions such as food allergies or GERD (gastroesophageal reflux disease). It's important to be able to recognize the physical symptoms and age-related coping clues you might notice, as listed on the top of the opposite page.

## IMPORTANT SAFETY INFORMATION (CONT'D)

Before using DUPIXENT, tell your healthcare provider about all your medical conditions, including if you:

- have a parasitic (helminth) infection.
- are scheduled to receive any vaccinations. You should not receive a "live vaccine" right before and during treatment with DUPIXENT.

Please see additional Important Safety Information throughout and full Prescribing Information including Patient Information.

# WHO GETS EoE SYMPTOMS?

Some EoE symptoms can affect all ages, including:

- Difficulty swallowing (dysphagia)
- Food getting stuck in the esophagus (impaction)
- Choking
- Vomiting
- Chest pain/heartburn even after taking proton pump inhibitors (PPIs)

Children (ages 1-11 years) may also experience:

- Stomach pain
- Regurgitation
- Food refusal



# HOW IS EoE DIAGNOSED?

If you're currently seeing another specialist, such as an Allergist or a Pediatrician, or a Primary Care Physician (PCP), and suspect you may have EoE, you may need a referral to see a Gastroenterologist (GI).

A GI needs to conduct tests, including an "endoscopy with biopsy," to confirm the symptoms are caused by EoE and if there is a high number of eosinophils.

# COPING WITH EoE?

EoE can make swallowing while eating difficult. That's what can lead people with EoE to develop a variety of coping mechanisms. A coping mechanism is a behavior or practice that helps deal with a symptom but not the cause. For EoE, it could be cutting food into tiny pieces, drinking a lot of water, or anything listed below that helps you get through a meal more easily.

## WHAT ARE SOME WAYS PEOPLE COPE WITH EoE SYMPTOMS?

- Cutting food into very small bites
- Eating very slowly
- Excessive chewing
- Skipping social occasions that center around eating
- Drinking lots of water
- Covering food in sauce
- Needing to visit the restroom to get food out of your esophagus

If you think you might have EoE, ask your doctor for a referral so a Gastroenterologist may conduct tests like an “endoscopy with biopsy” to get a diagnosis.

### IMPORTANT SAFETY INFORMATION (CONT'D)

Before using **DUPIXENT**, tell your healthcare provider about all your medical conditions, including if you:

- are pregnant or plan to become pregnant. It is not known whether **DUPIXENT** will harm your unborn baby.
  - A pregnancy registry for women who take **DUPIXENT** during pregnancy collects information about the health of you and your baby.

Please see additional Important Safety Information throughout and full [Prescribing Information](#) including [Patient Information](#).

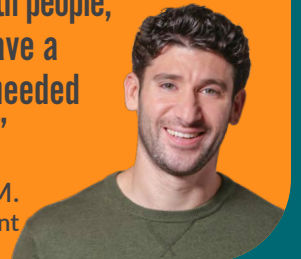


Patient Portrayal

Covering food in sauce is a common coping mechanism for EoE in adults.

“I ended up eating a lot of mushy foods. When I went out to eat with people, I always made sure to have a liquid with me in case I needed to ‘wash down’ my food.”

- Matt M.  
Real **DUPIXENT** EoE patient



Patient Portrayal

Food refusal is a common coping mechanism for EoE in children.

# A BREAK-THROUGH TREATMENT FOR EoE

## DUPIXENT IS PROVEN TO REDUCE INFLAMMATION AND IMPROVE SWALLOWING IN ADULTS AND ADOLESCENTS.\*

DUPIXENT is the first FDA-approved treatment of its kind for EoE. Other treatment approaches include:

- Proton pump inhibitors (PPIs)
- Swallowed corticosteroids
- Food elimination diets

Some of these treatments may provide short-term relief. Yet, for many patients, their EoE symptoms are still uncontrolled. DUPIXENT is neither a PPI nor a swallowed topical corticosteroid. It targets an underlying source of the inflammation that contributes to EoE.

PPIs are not FDA-approved to treat EoE.


### IMPORTANT SAFETY INFORMATION (CONT'D)

Before using DUPIXENT, tell your healthcare provider about all your medical conditions, including if you:

- are breastfeeding or plan to breastfeed. It is not known whether DUPIXENT passes into your breast milk.

Tell your healthcare provider about all the medicines you take, including prescription and over-the-counter medicines, vitamins, and herbal supplements.

Please see additional Important Safety Information throughout and full Prescribing Information including Patient Information.

**DUPIXENT**   
(dupilumab) Injection  
200mg · 300mg



Patient Portrayal

“After some time starting DUPIXENT, I have less of the feeling of swelling and inflammation in my esophagus. And my esophagus doesn’t feel closed up like it did.”

- Jake S.  
Real DUPIXENT EoE patient  
individual results may vary



## AT 24 WEEKS, PATIENTS TAKING DUPIXENT EXPERIENCED:\*



### IMPROVED SWALLOWING

That means less choking, chest pain, or food getting stuck in the esophagus.



### DECREASED INFLAMMATION IN THE ESOPHAGUS

DUPIXENT reduced signs of inflammation.

\*Based on a clinical trial with 240 adult and pediatric patients (12+ years of age, weighing at least 88 lbs) with EoE at week 24.

# THE FIRST [AND ONLY] TREATMENT OF ITS KIND

**DUPIXENT proactively treats EoE so you can get ahead of your symptoms**

**DUPIXENT is a biologic that helps block two of the key sources of inflammation inside the body that can cause EoE.**

Biologics are processed in the body differently than oral or topical medications. Most biologic medications come as liquids and are administered by injection.

DUPIXENT can be administered either by a doctor or at home after proper training.

## **IMPORTANT SAFETY INFORMATION (CONT'D)**

**Especially tell your healthcare provider if you are taking oral, topical, or inhaled corticosteroid medicines or if you have EoE and asthma and use an asthma medicine. Do not change or stop your other medicines, including corticosteroid medicine or other asthma medicine, without talking to your healthcare provider. This may cause other symptoms that were controlled by those medicines to come back.**

**DUPIXENT can cause serious side effects, including:**

- **Allergic reactions. DUPIXENT can cause allergic reactions, including skin reactions, that can sometimes be severe.** Stop using DUPIXENT and tell your healthcare provider or get emergency help right away if you get any of the following signs or symptoms: breathing problems or wheezing, swelling of the face, lips, mouth, tongue or throat, fainting, dizziness, feeling lightheaded, fast pulse, fever, hives, skin rash, including rash that looks like a bullseye or painful red or blue bumps under the skin, general ill feeling, itching, swollen lymph nodes, nausea or vomiting, joint pain, or cramps in your stomach area.

**Please see additional Important Safety Information throughout and full Prescribing Information including Patient Information.**

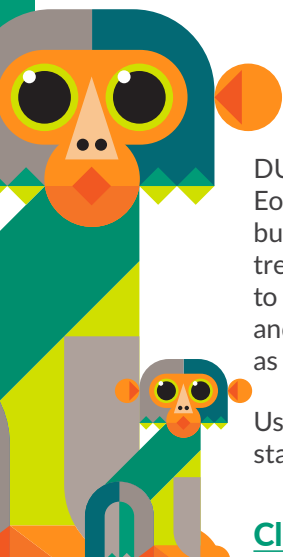


Patient Portrayal

[Click here](#)

to hear what other people with EoE have to say about DUPIXENT.

# THE FIRST AND ONLY FDA-APPROVED EoE TREATMENT FOR CHILDREN AS YOUNG AS 1 YEAR OLD (≥33 LBS)



DUPIXENT can help improve the EoE symptoms affecting your child, but that's only one part of their treatment journey. Knowledge is key to helping your child manage their EoE, and our resources can help guide you as a caregiver.

Use our discussion guide on [page 12](#) to start a dialogue with your child's doctor.

[Click here](#)

to find more DUPIXENT resources for caregivers of children with EoE.

## IMPORTANT SAFETY INFORMATION (CONT'D)

DUPIXENT can cause serious side effects, including:

- **Joint aches and pain.** Some people who use DUPIXENT have had trouble walking or moving due to their joint symptoms, and in some cases needed to be hospitalized. Tell your healthcare provider about any new or worsening joint symptoms. Your healthcare provider may stop DUPIXENT if you develop joint symptoms.

Please see additional Important Safety Information throughout and full [Prescribing Information](#) including [Patient Information](#).



Patient Portrayal

## DISCOVER A UNIQUE TREATMENT FOR CHILDREN WITH EoE



### REDUCES INFLAMMATION IN THE ESOPHAGUS\*

- DUPIXENT reduced eosinophils in the esophagus, which contribute to inflammation
- Visible improvements of the esophagus were seen in children treated with DUPIXENT



### HELPS RELIEVE EoE SYMPTOMS\*† AS OBSERVED BY CAREGIVERS

- This was seen as early as 4 months
- A similar improvement was also seen at 1 year

\*Results at 4 months from 61 patients ages 1 to 11 years old (≥33 lbs) with EoE in a two-part study.

†As measured by the Pediatric EoE Sign/Symptom Questionnaire-Caregiver (PESQ-C).

# TALK TO YOUR DOCTOR

The questions below can help guide you on what to ask when it comes to EoE and if DUPIXENT can help.

It's important for a doctor to understand all the symptoms and coping mechanisms that an EoE patient, be it you or your child, may have experienced.

## SYMPTOMS

### FOR ALL AGES

- Difficulty swallowing (dysphagia)
- Food getting stuck in the esophagus (impaction)
- Choking
- Vomiting
- Chest pain/heartburn even after taking proton pump inhibitors (PPIs)

### FOR AGES 1-11 YEARS

- Belly ache
- Acid reflux (acid coming up from stomach into throat)
- Regurgitation (food comes up from stomach into mouth)
- Food refusal (refuses to eat a meal)

### IMPORTANT SAFETY INFORMATION (CONT'D)

The most common side effects in patients with EoE include injection site reactions, upper respiratory tract infections, cold sores in your mouth or on your lips, and joint pain (arthralgia).

Please see additional Important Safety Information throughout and full Prescribing Information including Patient Information.

## COPING MECHANISMS

- Cutting food into small bites (the size a toddler could eat)
- Avoiding certain foods
- Avoiding social occasions that center around eating
- Blending food
- Adding sauces or dips to food
- Eating slowly, chewing excessively
- Drinking a lot of liquid

## HOW OFTEN DO THESE COPING MECHANISMS OR BEHAVIORS HAPPEN?

- Daily
- Several times a week
- Once or twice a month

## ARE THERE ANY MEDICATIONS BEING USED TO HELP MANAGE THE PATIENT'S EoE SYMPTOMS?

- No
- Yes. If so, what medications? \_\_\_\_\_

## QUESTIONS TO ASK:

How could DUPIXENT help?

What results have you seen with EoE patients on DUPIXENT?

What support is available for patients taking DUPIXENT?

Use the space below to write your own questions or any notes.

# A UNIQUE TREATMENT APPROACH

DUPIXENT targets an underlying source of Type 2 inflammation and

- Is not a steroid
- Is not an immunosuppressant
- Can be self-administered after proper training

## HOW DUPIXENT<sup>®</sup> (dupilumab) IS TAKEN

DUPIXENT is an injection given subcutaneously (under the skin). If your healthcare provider decides you or your caregiver can inject DUPIXENT, they will train you on the right way to prepare and inject it, at a frequency based on the chart below.



### PRE-FILLED PEN

Features a design that keeps the needle hidden during use. A viewing window and 2 click sounds let you know when your injection is complete.



### PRE-FILLED SYRINGE

A contoured finger grip provides a firm hold while you control the speed of your injection. The device also features a needle shield.

WEIGHT	FREQUENCY
33 to <66 lbs	200 mg every 2 weeks
66 to <88 lbs	300 mg every 2 weeks
88 lbs+	300 mg every week

## QUESTIONS ABOUT INJECTING?

If you have questions about taking DUPIXENT, we're here for you. [Click here](#) for supplemental injection resources, helpful tips, and training videos.

### IMPORTANT SAFETY INFORMATION (CONT'D)

Tell your healthcare provider if you have any side effect that bothers you or that does not go away. These are not all the possible side effects of DUPIXENT. Call your doctor for medical advice about side effects. You are encouraged to report negative side effects of prescription drugs to the FDA. Visit [www.fda.gov/medwatch](http://www.fda.gov/medwatch) or call 1-800-FDA-1088.

Please see additional Important Safety Information throughout and full [Prescribing Information](#) including [Patient Information](#).

**“For us it’s every 2 weeks. My son knows exactly what day it’s going to be, we’re ready for it. He’s asking me when we’re going to go ahead and take our injection today. We do it, and we move on!”**

- Jeni B., Mother of Josh,  
Real DUPIXENT EoE Patient



# WHAT IS DUPIXENT MyWay®?

Your or your child's specialist is your best resource for information about DUPIXENT and should be your primary point of contact throughout your treatment journey. The following information describes how **DUPIXENT MyWay** can provide additional support resources and help you receive DUPIXENT as quickly as possible.

## YOUR SPECIALIST PRESCRIBES DUPIXENT, AND YOU ENROLL IN **DUPIXENT MyWay**.

- You or your specialist can download the enrollment form on [DUPIXENT.com/support-savings/dupixent-my-way](https://www.dupixent.com/support-savings/dupixent-my-way). Then fill it out and fax back to **DUPIXENT MyWay** at **1-844-387-9370**
- You or your specialist can call **1-844-DUPIXEN(T)**, option 1
- Providing your email address allows **DUPIXENT MyWay** to give you more support resources about DUPIXENT

## IMPORTANT SAFETY INFORMATION (CONT'D)

Use DUPIXENT exactly as prescribed by your healthcare provider. It's an injection given under the skin (subcutaneous injection). Your healthcare provider will decide if you or your caregiver can inject DUPIXENT. **Do not** try to prepare and inject DUPIXENT until you or your caregiver have been trained by your healthcare provider. In children 12 years of age and older, it's recommended DUPIXENT be administered by or under supervision of an adult. In children 1 to less than 12 years of age, DUPIXENT should be given by a caregiver.

**Please see additional Important Safety Information throughout and full Prescribing Information including Patient Information.**

# WHAT DUPIXENT MyWay CAN DO FOR YOU

**DUPIXENT MyWay** is a patient support program designed to help you get access to DUPIXENT as quickly as possible and help you stay on track while providing helpful tools and resources.

## FOR ELIGIBLE PATIENTS, **DUPIXENT MyWay** CAN



Assign a Case Manager to help determine your eligibility for financial assistance as well as research and explain your insurance benefits



Find ways to help eligible patients with the out-of-pocket cost of DUPIXENT



Connect you with a Nurse Educator for DUPIXENT support



Provide supplemental injection training in person, virtually, or over the phone



Send you refill and injection reminders



Offer tips and tools to help you manage your treatment



# NEED ASSISTANCE PAYING?

## WE CAN HELP

### THE *DUPIXENT MyWay* COPAY CARD PROGRAM MAY HELP REDUCE THE OUT-OF-POCKET COST OF DUPIXENT.

The *DUPIXENT MyWay* Copay Card Program may help reduce the out-of-pocket cost of DUPIXENT. If you have commercial health insurance, you may be eligible to pay as little as \$0\* in copay per fill of DUPIXENT through the *DUPIXENT MyWay* Copay Card Program.

### AS LITTLE AS \$0 COPAY MAY BE AVAILABLE IF YOU:

- Have commercial insurance
- Have a DUPIXENT prescription for an FDA-approved condition
- Reside in the 50 United States, the District of Columbia, Puerto Rico, Guam or the USVI
- Are a patient or caregiver 18 years or older

\*Subject to the program maximum per patient per calendar year. Approval is not guaranteed. THIS IS NOT INSURANCE. Not valid for prescriptions paid, in whole or in part, by Medicaid, Medicare, VA, DOD, TRICARE, or other federal or state programs, including any state pharmaceutical assistance programs. This program is not valid where prohibited by law, taxed, or restricted. *DUPIXENT MyWay* reserves the right to rescind, revoke, terminate, or amend this offer, eligibility, and terms of use at any time without notice. Any savings provided by the program may vary depending on patients' out-of-pocket costs. The program is intended to help patients afford DUPIXENT. Patients may have insurance plans that attempt to dilute the impact of the assistance available under the program. In those situations, the program may change its terms. Additional terms and conditions apply.

## OTHER OPTIONS FOR SUPPORT


- Through the Patient Assistance Program, patients who are uninsured or rendered uninsured by their insurance provider could receive DUPIXENT free of charge if they qualify.
- Those who may qualify must be at least 18 years of age or older, a resident of the 50 United States, the District of Columbia, or Puerto Rico, and demonstrate a financial need.

Call *DUPIXENT MyWay* at 1-844-387-4936 for full program information and eligibility criteria.

[Click here](#)

to learn more about the *DUPIXENT MyWay* copay card.

Please see additional Important Safety Information throughout and full Prescribing Information including Patient Information.

**DUPIXENT**<sup>®</sup>   
(dupilumab) Injection  
200mg · 300mg



## WITH EoE UNDER CONTROL, IMAGINE THE POSSIBILITIES

Bring this brochure to your  
Gastroenterologist or Allergist and  
ask about DUPIXENT for EoE.

[Click here](#)  
to visit [DUPIXENT.com/eoe](https://www.dupilumab.com/eoe)

Patient Portrayal

### IMPORTANT SAFETY INFORMATION

**Do not use** if you are allergic to dupilumab or to any of the ingredients in DUPIXENT.

Please see additional Important Safety Information throughout and full Prescribing Information including Patient Information.

**sanofi** | **REGENERON**<sup>®</sup>

© 2026 Sanofi and Regeneron Pharmaceuticals, Inc. All Rights Reserved. DUPIXENT and DUPIXENT MyWay are registered trademarks of Sanofi or an affiliate. US.DUP.26.03.0140 03/26

Health information contained herein is provided for general educational purposes only. Your doctor is the single best source of information regarding your health. Please consult your doctor if you have any questions about your health or treatment.